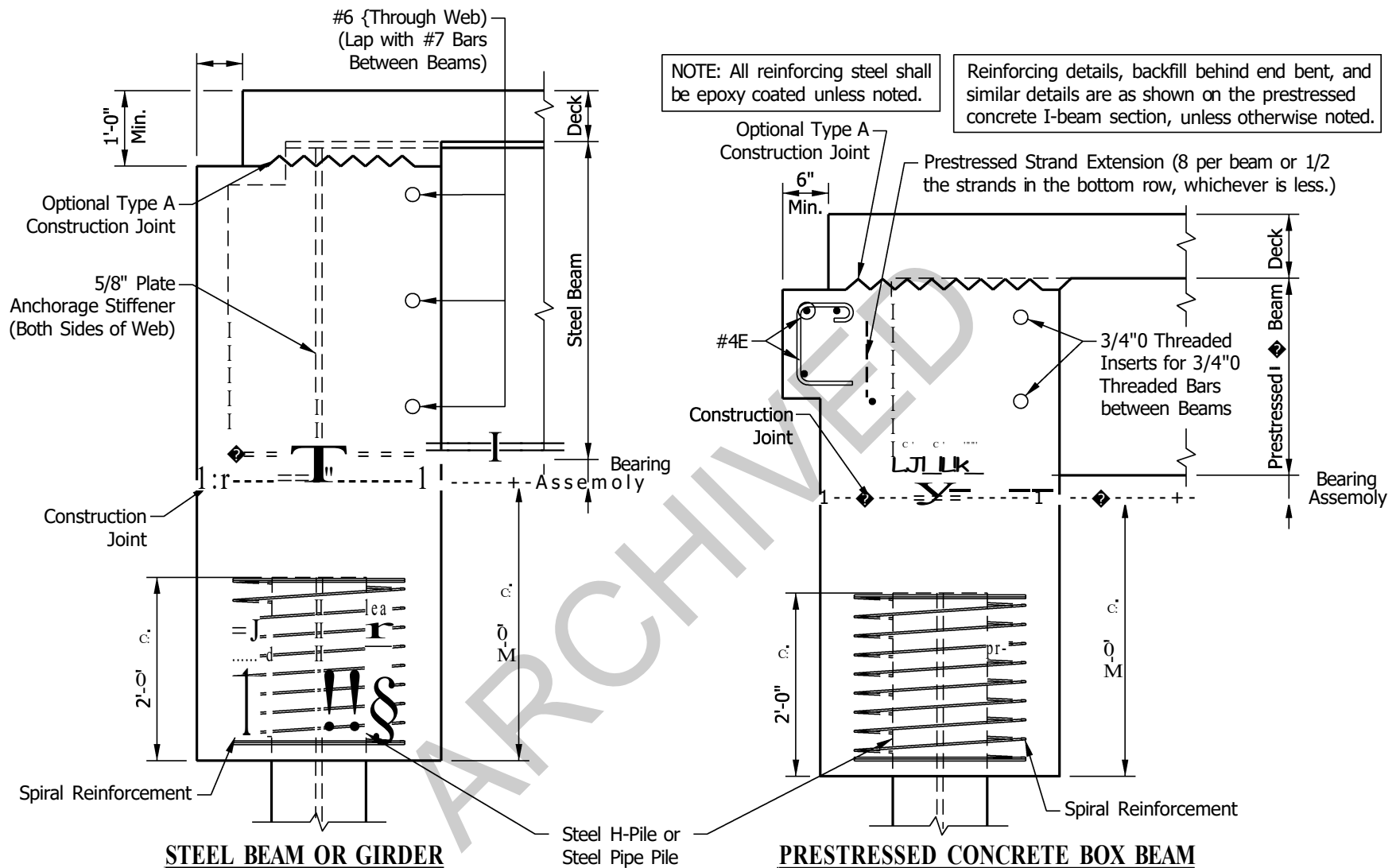


NOTES:

- (D) A pavement ledge greater than 6 in. may be considered for skewed structures or structures subject to significant truck traffic.
- O A depth greater than 6 ft requires approval from the Office of Bridge Design.
3. All reinforcing steel shall be epoxy coated.

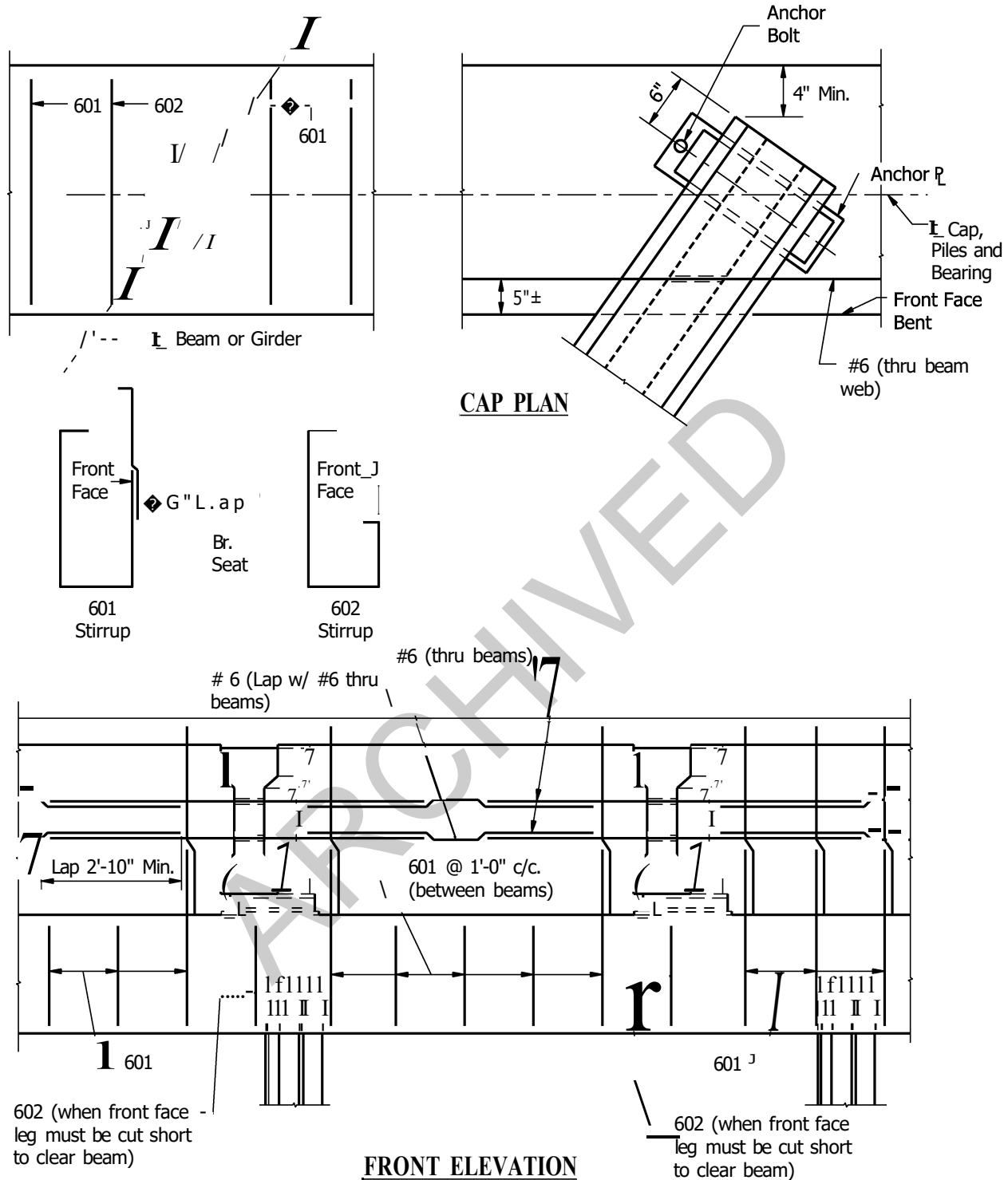
SUGGESTED INTEGRAL END BENT DETAILS Method B, Beams Attached to Concrete Cap

Figure 409-2D
(Page 1 of 4)



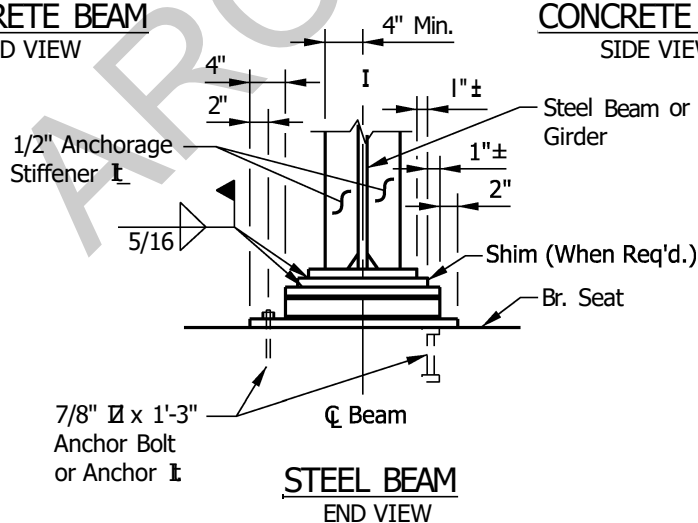
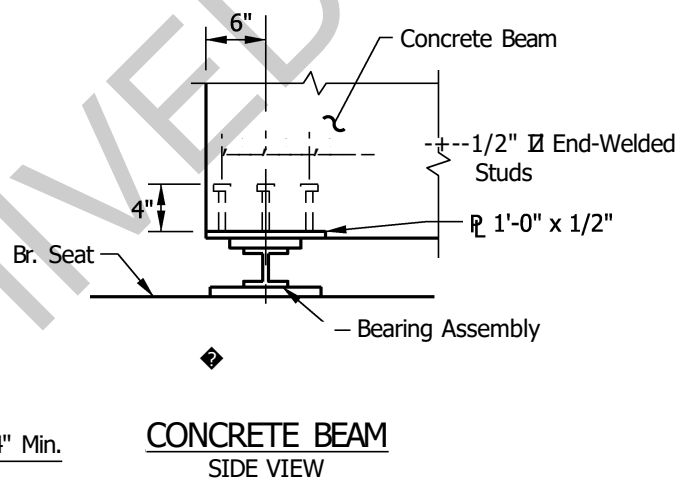
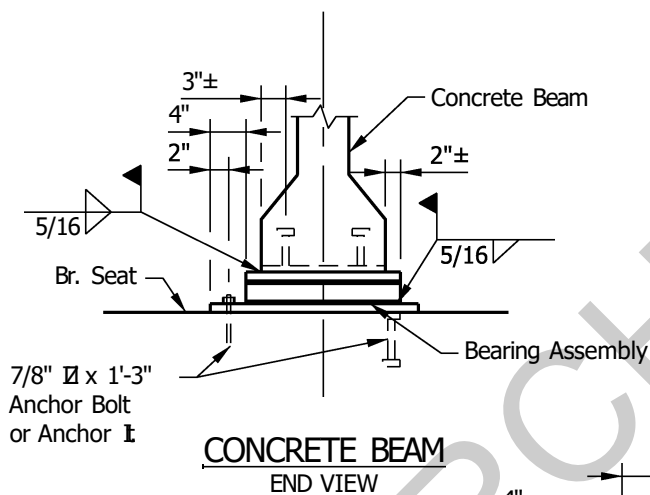
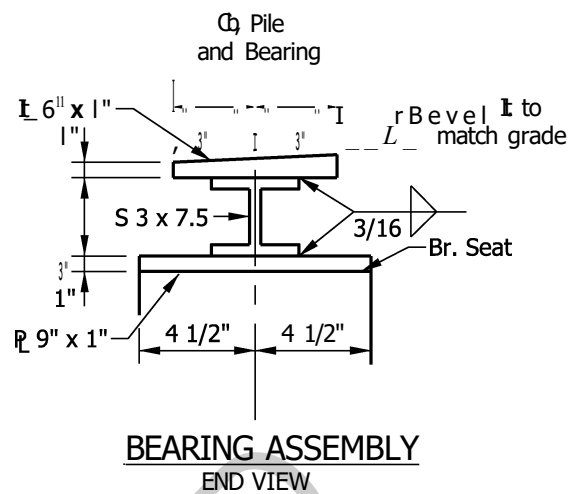
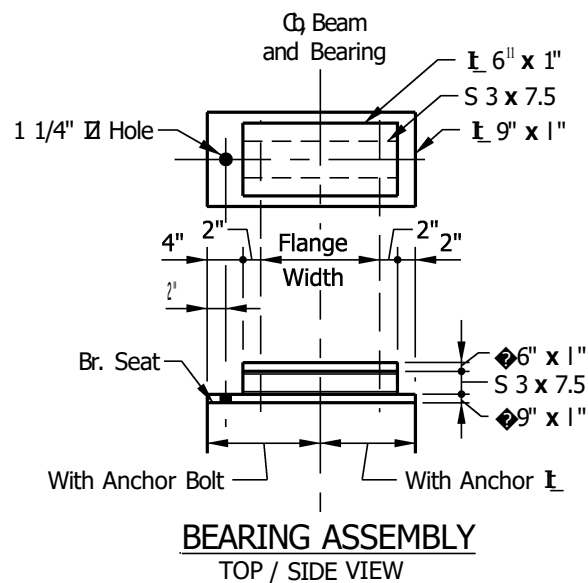
SUGGESTED INTEGRAL END BENT DETAILS Method B, Beams Attached to Concrete Cap

Figure 409-2D
(Page 2 of 4)



SUGGESTED INTEGRAL END BENT DETAILS Method B, Beams Attached to Concrete Cap

**Figure 409-2D
(Page 3 of 4)**



SUGGESTED INTEGRAL END BENT DETAILS

Method B, Beams Attached to Concrete Cap

Figure 409-2D
(Page 4 of 4)